

# CONCIERGE

MONTHLY NEWSLETTER MAY - JUNE 2022



SOFITEL  
HOTELS & RESORTS

LONDON ST JAMES

## DEAR GUESTS

We wish you an enjoyable stay at one of Sofitel's luxury addresses, a symbol of French elegance around the world. This letter presents our recommendations for May and June. We are delighted to highlight some Magnifique local events. Please feel free to contact our dedicated Concierge team for assistance in all the latest events and attractions in the heart of London.

Joe Rodrigues,  
Les Clefs d'Or Head Concierge



## HOTEL EVENTS NEWS

### The Rose Lounge

Treat yourself to our Platinum Jubilee themed Afternoon Tea served in our exquisite Rose Lounge (available from May 20<sup>th</sup> – 19<sup>th</sup> June).

### Wild Honey St James

Our Michelin Star restaurant offers the finest seasonal British produce and contemporary French cooking created by Executive Head Chef Anthony Demetre.

### St James' Bar

Discover our unique cocktails for the Platinum Jubilee inspired by the Queen's Life (available from 16<sup>th</sup> May – 12<sup>th</sup> June).

## CITY EVENT

RHS CHELSEA FLOWER SHOW  
24/05/2022 - 28/05/2022

A staple in every gardener's calendar, the Chelsea Flower Show is one of the UK's institutions and is great for anyone with a love of landscaping, design and all things green.

Some of the highlights include a section of gardens focused on health and well-being as well as exhibits focused on gardening in smaller spaces aimed at city-dwellers with green fingers.



## CITY EVENT

TROOPING THE COLOUR  
UNTIL 02/06/2022

The Queen's Platinum Jubilee celebration will begin with the Trooping the Colour, with the parade closing with a traditional RAF fly-past.

A tradition since 1748, over 1,400 officers and men from the queen's personal guard – as well as over 200 horses – put on an impressive parade from Buckingham Palace along The Mall to Horse Guards Parade in Whitehall and then back again to celebrate the Queen's official birthday.

We recommend watching it from the Mall or St. James Park.



## CITY EVENT

LONDON SYMPHONY ORCHESTRA  
OPEN-AIR CONCERT – TRAFALGAR SQUARE  
UNTIL 11/06/2022

Hear London's oldest symphony orchestra for free in an open-air concert in Trafalgar Square.

This year's programme will feature the debut LSO performance of cellist Sheku Kanneh-Mason and a new work, FAIYA!, by Ayanna Witter-Johnson along with Gershwin classics

such as Cuban Overture and An American in Paris.

As with all free events, we recommend getting there early. And not to dampen anyone's festivities, but there is always a chance of rain, so bring something waterproof – though not umbrellas, they ruin concert viewing!



## CITY EVENT

LONDON SQUARE OPEN GARDENS WEEKEND  
11/06/2022 - 12/06/2022

Take a peek behind the gates of London's private gardens and discover grassy gems during London Square Open Garden.

There are over 100 participating gardens across various boroughs in association with London Gardens Trust. Venture into private gardens, roof gardens and community allotments, as well as gardens belonging to historic

buildings, museums churches and universities as they open to the public for one special weekend.

Many of the public gardens provide guided walks, interesting talks and bike tours, as well as entertainment and food stalls during the weekend.

Highlights include: the historic Lincoln's Inn Gardens, which celebrates its 600th birthday this year; Montague Street Gardens, a classic formal garden square in Bloomsbury; and Nomura International PLC, a contemporary terrace garden with unobstructed views over the River Thames.

Among the gardens that are new to the event this year are the award-winning Mona's Garden, which has all kinds of exotic plants, and St Paul's Woodland Garden, in the churchyard.



---

## CITY RECOMMENDATIONS

**RAPHAEL – NATIONAL GALLERY**  
UNTIL 31 JULY 2022

Despite his short life, the multi-talented Italian Renaissance painter Raphael had a profound influence on Western culture.

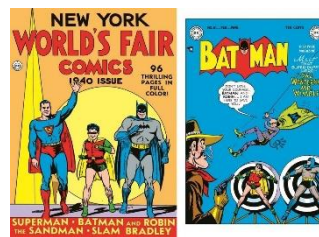
Considered more versatile than Michelangelo and more prolific than Leonardo da Vinci, Raphael is not only held up as an exemplar of classicism, he also designed across artforms that he didn't himself practice. Discover an artist who wrote his name into history with just two decades of work, in this wide-ranging showcase.



**SUPERHEROES, ORPHANS & ORIGINS: 125 YEARS IN COMICS – THE FOUNDING MUSEUM**  
UNTIL 28 AUGUST 2022

From Black Panther to Spider-Man, many superheroes are inspired by foundlings, orphans, adoptees and foster children – explore how their early life experiences shaped the characters they became.

Also, on display are three brand-new commissions by comic artists Asia Alfasi, Bex Glendining and Woodrow Phoenix, all examining care identity and experience.



**SURREALISM BEYOND BORDERS – TATE MODERN**  
UNTIL 29 AUGUST 2022

This landmark exhibition charts Surrealism's global reach, revealing a movement shared by artists around the world for over half a century.

One of the few art movements to truly go global, surrealism is explored here as a universal and complicated creative language, with historical, national and local differences. This broadened scope properly captures a movement that began in Paris, but had a lasting effect on humanity's creative imagination.



---

## SHOPPING ADDRESSES

### Maison Assouline

6-minute walk from the hotel

'One of the world's most beautiful bookstores', publishing company Assouline has created a cultural concept store in a heritage banking hall in Piccadilly. In addition to spectacular books, you will find furniture, limited edition gifts, and objects d'art picked up on Assouline travels.

### Burlington Arcade

9-minute walk from the hotel

Dating back to 1819, Burlington Arcade was originally designed as a fine jewellery destination for the upper classes. Two hundred years later it is still a prime luxury destination, housing Chanel, La Perla and trailblazing Egyptian female jewellery designer Azza Fahmy behind its historic frontage.

### Smythson

15-minute walk from the hotel

The lifestyle brand has returned to the home of Frank Smythson's first store for its 130th anniversary. The boutique is housed in a listed arts and crafts building, with a collection's hall, a library, a gold stamping area where the Smythson craftsmen can be found personalising leather goods, and a bespoke stationery 'salon'.

### Cannaught Village

TUBE: MARBLE ARCH STATION

Cannaught Village is the Hyde Park Estate's luxury retail quarter and one of London's most exclusive spots for independent shopping, drinking and dining. It is what can truly be described as an enclave of discovery, and a very London experience.

---

## LIFE IS MAGNIFIQUE... IN SINGAPORE

### FOCUS ON SO/ SOFITEL SINGAPORE

A luxury boutique hotel ideally located in the city-state's central business district, fusing old-world charm with the latest technology. Housed within an iconic former telecommunications building and decorated with a perfect blend of both French style and chic Singaporean influences, it redefines the luxury hotel experience in the Lion City, and is perfect for any traveller who wishes to experience local charm at its best. Enjoy unique experiences in design and gastronomy that showcase local traditions and cultures in a new light to surprise and delight.

Within close proximity to Chinatown, Marina Bay, and Orchard Road, SO/ Singapore is the ideal choice of accommodation for business and leisure travellers, and staycations. SO/ Singapore is well connected with 3 MRT stations within close walking distance.

35 Robinson Road, Singapore 068876  
Tel: +49 6701 6800 – Email: H8655@so-hotels.com

